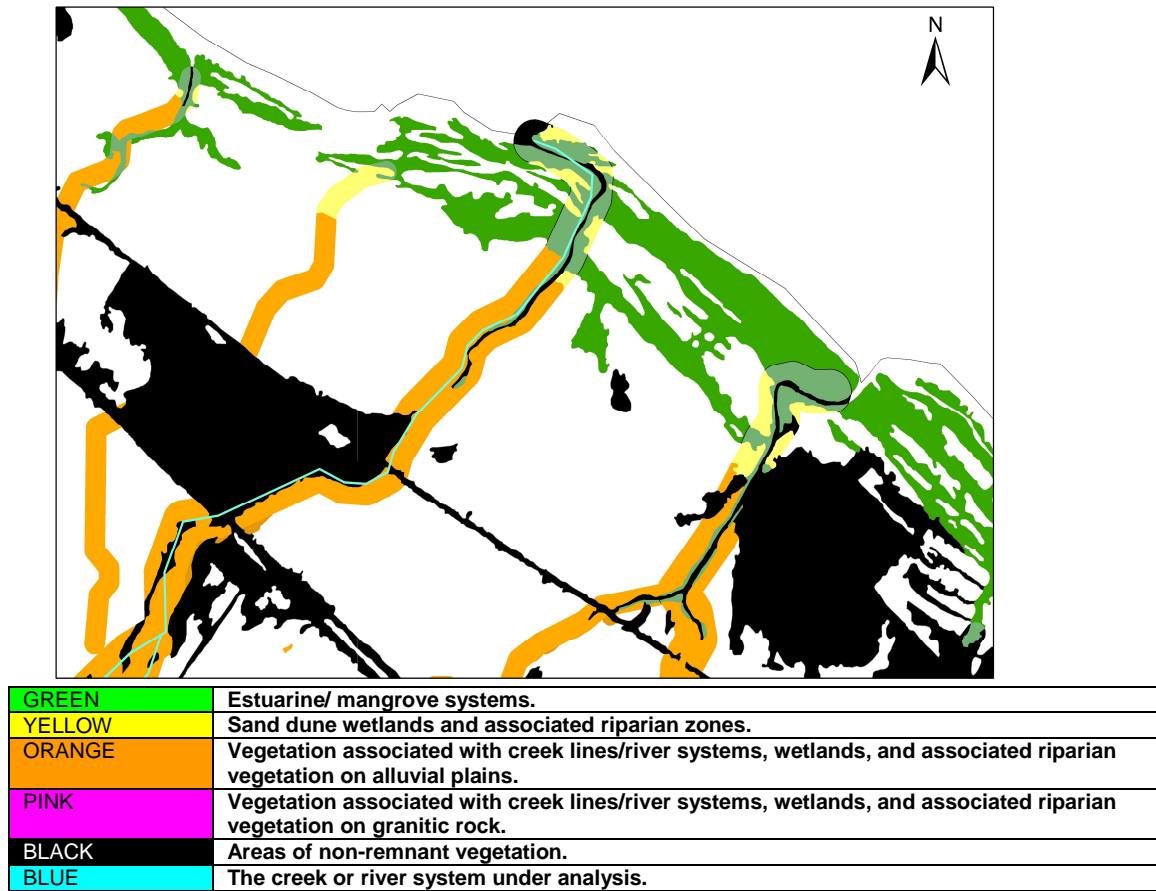


Figure 56: Riparian Systems of Leichardt Creek Lower Reaches



### 3.1.18.3 LEICHARDT CREEK LOWER REACHES, RIPARIAN CONDITION

The riparian condition of Leichardt Creek's lower reaches is generally moderate. However, disturbances between the Bruce Highway and the railway corridor are extensive with the northern bank completely cleared between these two corridors. This land has been used for agricultural/pastoral purposes with exposed surfaces potentially compromising water quality via overland flows. All other areas have extensive coverage with only minor disturbances within the designated buffer zone.

### 3.1.19 Sleeper Log/ Christmas Creeks

Figure 57: Location of Sleeper Log/ Christmas Creeks

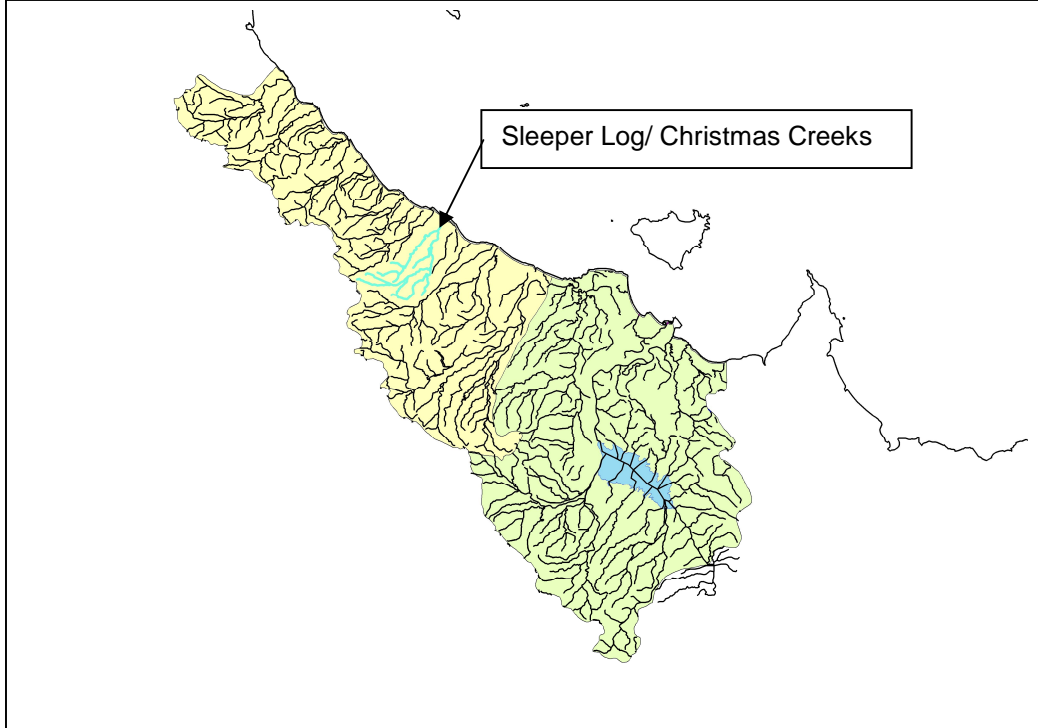
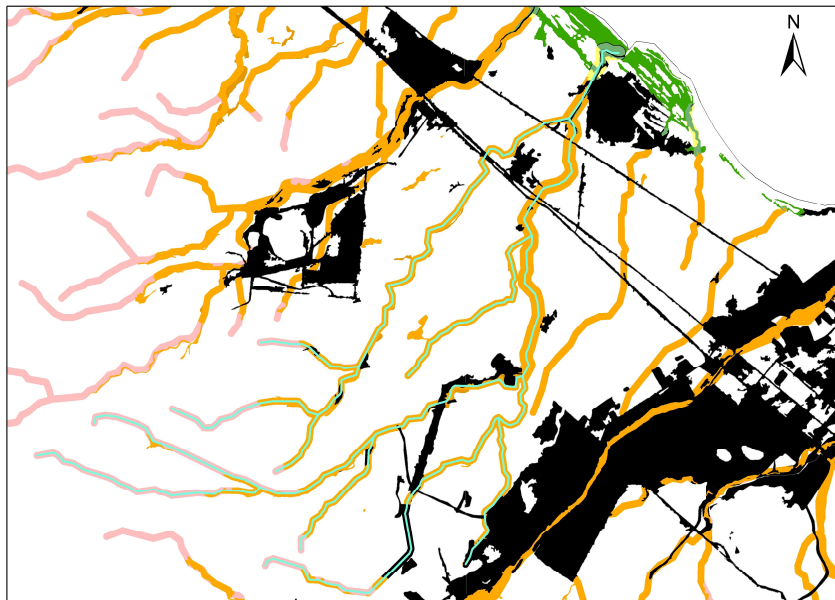


Figure 58: Riparian Systems of Sleeper Log/ Christmas Creeks



<b>GREEN</b>	Estuarine/ mangrove systems.
<b>YELLOW</b>	Sand dune wetlands and associated riparian zones.
<b>ORANGE</b>	Vegetation associated with creek lines/river systems, wetlands, and associated riparian vegetation on alluvial plains.
<b>PINK</b>	Vegetation associated with creek lines/river systems, wetlands, and associated riparian vegetation on granitic rock.
<b>BLACK</b>	Areas of non-remnant vegetation.
<b>BLUE</b>	The creek or river system under analysis.